

Preserving nature, Leading innovation....!

ACFA اكفا
BUILDING SOLUTIONS حلول بناء

الطبيعة عشقنا و الابتكار شغفنا و طموحنا يتخطى الحدود.

أكفا كيان صناعي سعودي وطني يتحرك بثقة على طريق التنمية المستدامة, نقدم حلول البناء المبتكرة التي تلبى تطلعات السوق المحلية و منافسة رواد الصناعة في السوق العالمية متبنين مبدأ "الكل رابح" و سواعدنا الطموحة تستهدف ابتكار حلول اقتصادية تحقق رفاهية في متناول الجميع.

ACFA building Solutions is dedicated to sustainable development, offering Local and global consumers series of new age building products and highly Innovative solution which satisfy demand. And create the enterprise win-win situation, presenting a unique formula for an affordable luxury.



Preserving Nature, Leading Innovation

ACFA

ACFA اكفا
BUILDING SOLUTIONS حلول بناء



“ even if we`ll never be able to change the world,
Our work should help
making our living space
a better place
for our existence **”**



ABOUT US

من نحن

في منشأتنا الصناعية الحديثة في المنطقة الوسطى بالمملكة العربية السعودية مستخدمين أحدث تكنولوجيا صناعة المنتجات الإسمنتية , نقوم في شركة أكفا لحلول البناء بتصنيع مجموعة واسعة من ألواح الاليف الاسمنتية للتطبيقات الداخلية والخارجية بأعلى درجات الجودة مع برامج التسويق و المبيعات الديناميكية التي تهدف إلى تقديم حلول بناء حديثة يعتمد عليها.

In its ultra-modern industrial facility in Saudi Arabia "Central Provenance", ACFA Building Solutions manufactures a wide range of Fiber Cement Boards for Interior, Exterior, as well as Semi-Exposed applications. ACFA is geared toward providing the highest quality products through dynamic sales & marketing programs with the objective of delivering sustainable building solutions to aspiring construction Professionals in MENA (Middle East and North Africa) Region.



رؤية VISION
2030
المملكة العربية السعودية
KINGDOM OF SAUDI ARABIA

ACFA اكفا

OUR VISION



رؤيتنا

المساهمة بشكل مستمر في نمو الاقتصاد السعودي، وفقا لرؤية المملكة ٢٠٣٠.

Contributing continuously to the growth of the Saudi economy, in accordance to Kingdom`s 2030 vision.

الإستفادة من موارد المملكة المحلية و المواد الخام المتوفرة بشكل مبتكر، وتوفير حلول البناء السهلة للحد من الاعتماد على المنتجات المستوردة وخفض التكاليف اللوجستية.

To innovatively utilize the kingdom`s local rich resources and raw materials, reducing the dependability on imported products and cutting down its related logistic costs.

أن نكون منتجا رئيسيا في مجال تصنيع ومبيعات منتجات الاسمنت و حلول البناء بمواصفات فريدة من نوعها لمنتجات عالية الجودة و أرقى مستويات الخدمة، وفقا لاعلى المعايير المهنية التي تعزز تطور الامكانيات البشرية.

To be a major player in the manufacturing and Sales of Fiber Cement products with Unique attributes, characterized by superior quality products and services excellence in practices & value system that nurture human potential.

تعزيز موقعنا بين رواد صناعة المنتجات الاسمنتية في الشرق الأوسط.

To maintain and develop a respectable position among Fiber Cement market leaders in the MENA (the Middle East & North Africa) Region.

توفير قيمة مضافة لأصحاب المصلحة في أعمالنا من خلال الحفاظ على معايير صارمة للجودة كأولوية قصوى.

Providing value to the stakeholders in our business by maintaining exacting standards of quality as a top priority.



الاستدامة

يدور عملنا حول بناء مجتمعات حديثة تتمتع ببيئة سليمة. يميزنا التزامنا بمبادئ الاستدامة من خلال استراتيجية تعطي الأولوية لمبدأ: لا ضرر و لا ضرار



Sustainable

Our business is about building better communities that have a lower impact on our environment and are built to last. We have formalized our commitment to sustainability with a strategy prioritizing Zero Harm.

BRAND VALUES قيمنا

عميلنا هو محور الاهتمام

جميع أنشطتنا وجهودنا تركز على وضع العميل في قلب اهتماماتنا من خلال إعطاء الأولوية لاحتياجات العميل وتطلعاته.



Customer centric

All our activities and efforts focused on positioning the Client at the heart of our concern by prioritizing the client's needs and aspirations.

نستشرف المستقبل ونعمل له

يعد تطوير حلول البناء المبتكرة من أولوياتنا ، مدفوعين بشغف لا محدود للبحث والتطوير المستمر.



Futuristic

Developing Innovative Building solutions is our main goal, driven by our passion for continuous Research & Development.

نقدم حلول في المتناول

منذ بدايتها ، تميزت أكفا كشركة مسؤولة تقدم حلول بناء مبتكرة يعتمد عليها و تلبي متطلبات السوق



Accountable

Since its inception, ACFA Building Solutions was-recognized as an accountable organization that offers reliable building solutions that meet specific market demands.





MANUFACTURING

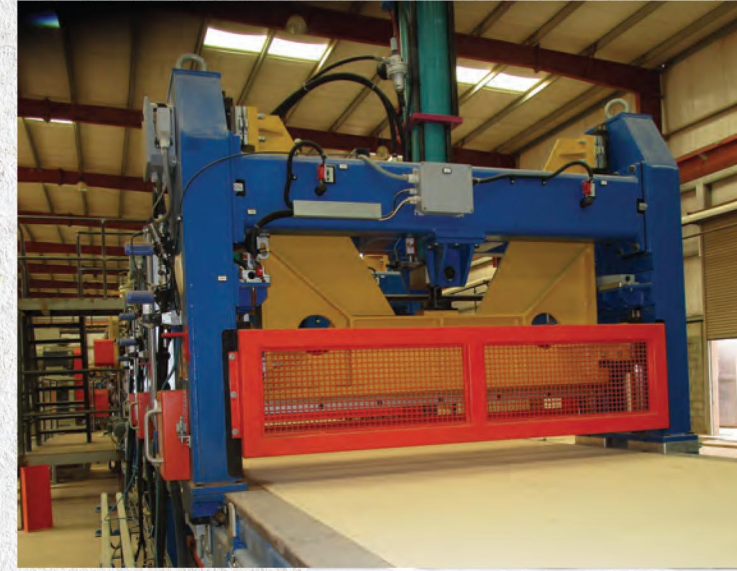
MANUFACTURING

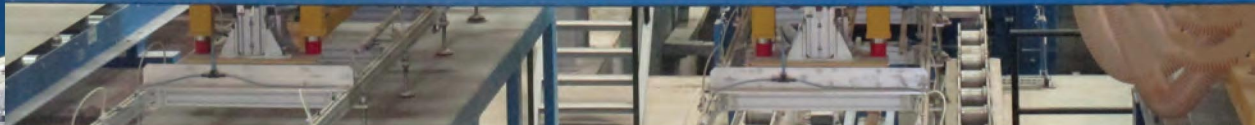
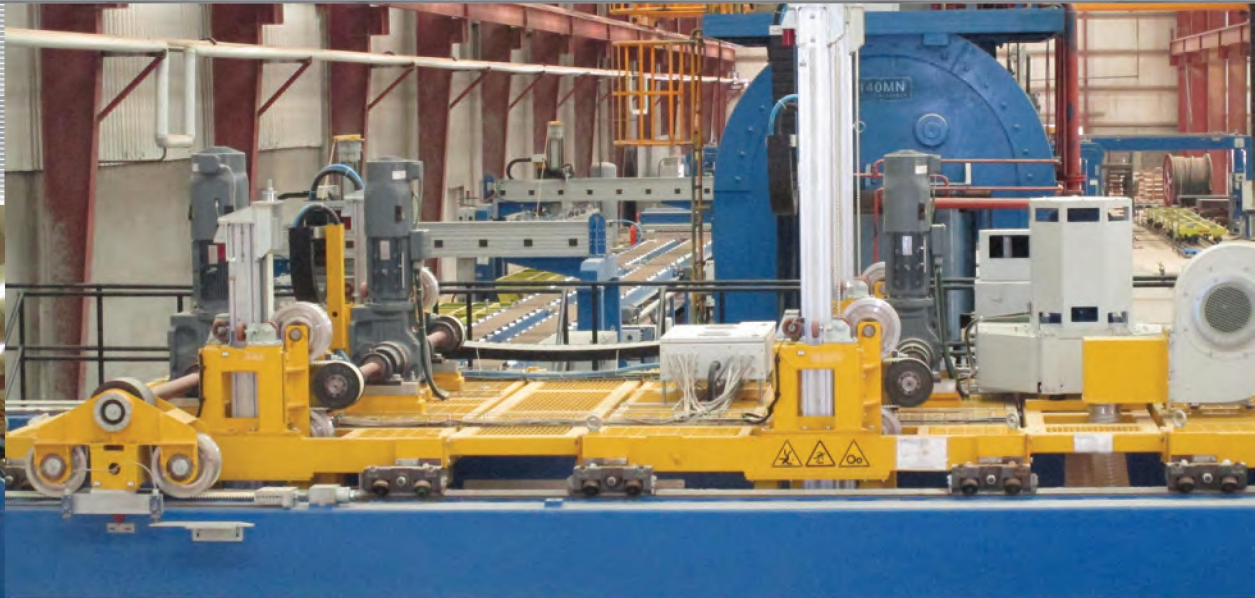
نتميز في أكفا بكل فخر بأحدث تقنيات الصناعة و المعدات الحديثة التي تم استيرادها بالكامل من أوروبا. بقدرة إنتاجية تصل إلى ستين ألف طن / سنة ، نلبي متطلبات العملاء بدقة بالغة وفقا لأشده معايير الجودة صرامة "سواء المحلية أو الدولية "على حد سواء. كما خصصنا بأكفا قسما لبحوث تطوير المنتج، منتجات أكفا اعتمادية وتناسب أي نوع من المباني: سكني ، تجاري ، صناعي ، تعليمي ، طبي وضيافة. خاصة إذا كان سرعة التنفيذ و النظافة لهم الأولوية

The hallmark of ACFA Building Solutions is proudly the state-of-the-art machinery and manufacturing know-how that "together" were imported from Europe.

With a plant production capacity of up to 60000 tons/year, we cater exacting requirements of our customers. ACFA has dedicated a department for product quality control and new product development.

Our ultra-modern plant is well-equipped to cater to products that conform to "both" local and international standards (like SASO, ANSI, ISO, and BS/EN). A wide range of ACFA Boards are reliable and suit any building type: residential, commercial, industrial, Educational, Medical, and hospitality-especially where speedy construction, cleanliness, and hygiene are a priority.





ACTAVIS

Our Products

intertek



ASTM C1186 - EN 12467

ACFABOARD®

ACFA Board® is the perfect choice for Interior board applications such as Ceilings, partitions, & Wall Lining. ACFA board is reliable & suits any building type, especially where speedy construction, cleanliness, and hygiene are the priority. ACFA Boards are completely moisture-resistant, termite, and fire-resistant, and accept a variety of finishing choices.

ACFA HD®

ACFA HD® Board is unmatched weather-resistant, best suited for claddings and facades, which are easy to install and extend design flexibility. Apart from being cost-effective and low-maintenance, they also give an effortless joint-less panel design with a render finish or a classy-modern look with a uniform gap/groove.

ACFA PLUS®

ACFA PLUS® is a durable, Water-Resistant Specialist Board used as a backer for floors, walls, countertops, tubs, and shower areas. If the waterproofing fails, you can rest assured that ACFA plus won't. It has incredible hanging power for tiles, hooks, and fixings. It can hold tiles with a maximum weight of 100 kg/m²



2400X1200mm
(Metric)

2440X1220mm
(Imperial)

ACFABOARD®



مقاوم للرطوبة
Moisture Resistant



مقاوم للحريق
Fire Resistant



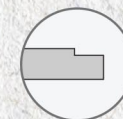
مقاوم للحشرات
Termite Resistant



صديق للبيئة
Eco Friendly



Square Edges



Tapered Edges

The perfect choice for interior board applications

ACFA Board® is the perfect choice for Interior applications such as Partitioning, Decorative walls, and ceiling applications. ACFA board is reliable & suits any building type: residential, commercial, and industrial buildings, especially where speedy construction, cleanliness, and hygiene are the priority. ACFA Boards are synonymous with hassle-free installation. It is Manufactured using revolutionary High-Pressure Steam Curing Technology. Accordingly, these boards are perfectly resistant to moisture, termite, and fire and accept varied finishing choices.

Standard Thicknesses:

6 mm | 9mm | 12mm | 15mm | 18mm



TE

SE

ACFABOARD®

ACFA Board® combined with different frameworks like timber, steel, or aluminum, offers unique advanced drywall constructions, which help leverage maximum space utilization and substantial time saving.

ACFA boards offer Architects major flexibility in design and thermal and acoustic insulation, besides being maintenance-free & highly durable. ACFA Fiber Cement boards come with square edges to provide a gape/ groove and can also be tapered, with special LKS coating for a joint-less finish.

These Interior solutions allow you to do the finishes with paints, veneers, wallpapers, etc. In other words, ACFA boards enable you to create a Ceiling, wall, or floor in a premium finish of your choice.



SEGMENT	Exposed Grid - Designer	Concealed Frame - Groove/ Gap-Plain	Concealed Frame- jointless - Plain & Tapered
RESIDENTIAL	●	●	
INDUSTRIAL	●	●	
WAREHOUSING	●	●	
HEALTH CARE			●
RETAIL /OFFICE	●	●	●
EDUCATION	●	●	●
HOSPITALITY	●	●	●
LEISURE & ENTERTAINMENT	●	●	

Interior Solutions

DRYWALLS			INFILL WALL		LINING			FLOORING	
Exposed Frame - Insert - Plain/ Designer	Concealed Frame - Groove/ Gap - Plain/ Designer	Concealed Frame - jointless - Plain & Tapered	Concealed Frame - Groove/ Gap - Plain/ Designer	Concealed Frame - jointless - Plain & Recessed	DRY AREA- Concealed Frame- Groove/ Gap- Plain/ Designer	DRY AREA - Concealed Frame - jointless - Plain & Tapered	WET AREA - Concealed Frame - Plain	MEZZANINE Light Steel Frame - Single/ Double Layer- Plain	Intermediate- Light Steel Frame - Single/ Over Decking- Plain
		●	●	●	●	●	●		●
●	●							●	●
●	●		●	●				●	●
		●	●	●					
●	●	●			●	●	●	●	●
●	●	●	●	●	●	●	●	●	●
	●	●	●	●	●	●	●	●	●
	●				●	●	●	●	●

Finishing options

- Paint/Polish
- Texture Coating
- Veneer lamination
- Wall paper

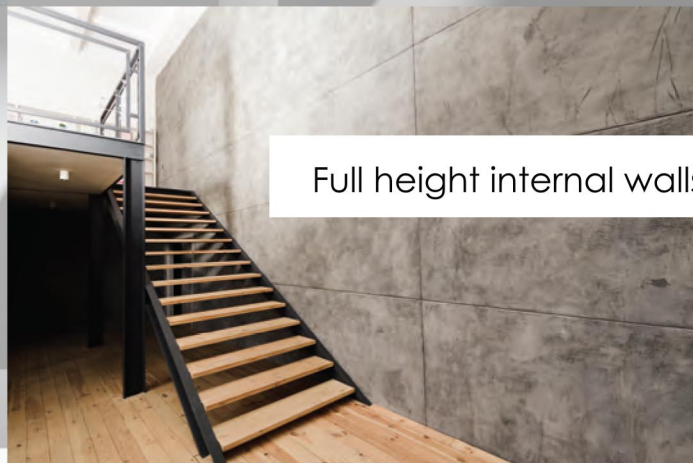
ACFABOARD®



Half height Internal walls

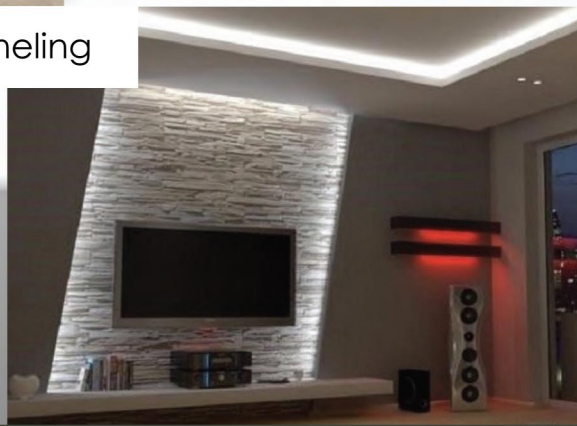


Internal Ceiling



Full height internal walls

Internal wall lining/Paneling



ACFA اکفا

TECHNICAL SPECIFICATION

AS PER ASTM C1186

Sl. No.	Product Characteristics	Requirement	Performance
	Dimensional Tolerances		
1	Thickness (mm) Up to 5 mm 5 mm to 10 mm 10 mm to 16 mm 16 mm to 20 mm	± 0.5 mm ±1.0 mm ± 1.3 mm ±1.5 mm	Within Standard
2	Length (mm)	±0.5% ± 6 mm (max)	Within Standard
3	Width (mm)	±0.5% ±6 mm (max)	Within Standard
4	Straightness of edges - mm	2.6 mm / m	1
5	Squareness of edges - mm	2.6 mm/m	2
	Physical Properties :		
6	Category as per Standard	Type A	Type A
7	Grade as per MOR	Grade - I	Grade - I
8	MOR at EMC in (MPa) Minimum	4	> 7
9	Density, Kg/m ³	1300±5%	1300±50kg
10	Water absorption (48 hrs. test) %	≤33%	30%
11	Moisture Movement (mm/m)	< 0.05	0.04
12	Freeze-Thaw Performance -Observation Strength Retention	No deleterious effect ≥50 Cycles	Internal report
13	Heat / Rain test -Observation Structural Alternation	No Visible Cracks ≥50 Cycles	Internal report
14	Warm Water Test -Observation Strength Retention	No deleterious effect ≥50 Cycles	Internal report
15	Surface Burning Characteristics As per ASTM E 84-21a (9&18) mm Board	Flame spread Index = 0 Smoke developed Index ≤5	Passes the requirement

Light yet Tough, for External Board Applications

2400X1200mm
(Metric)

2440X1220mm
(Imperial)

ACFAHD®



مقاوم للرطوبة
Moisture Resistant



مقاوم للحريق
Fire Resistant



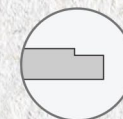
مقاوم للصدمات
Impact Resistant



صديق للبيئة
Eco Friendly



Square Edges



Tapered Edges

At ACFA, everything we do stems from an eco-friendly, cost-effective, and advanced construction approach. **ACFA HD®** compressed Fiber Cement Boards challenge the conventional practice of Brick / Block based wet construction. The unique compression technology at the green stage gives it superior strength even in wet conditions, ensuring a higher strength-to-weight ratio. ACFA High-Density Boards are inherently weather resistant and offer superior impact resistance, especially under exposure to high wind reversal stress making them ideal for mid to High rise. In addition to their excellent durability, they come pre-finished and are easier to install, thus reducing the construction time. **ACFA HD®** boards are unique in their category, blending with a wide range of surface finishes like laminates, ceramic, vitreous tiles, acrylic textures, and renders.

Standard Thicknesses


6
mm

9
mm

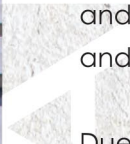
12
mm

15
mm

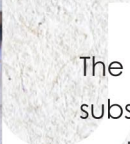


A close-up image of the ACFA HD Board, showing its textured, fibrous surface. The board is light gray and has a rectangular shape with rounded corners.

ACFA HD® High-Density Boards sustain prolonged exposure to the sun, rain, and UV. Backed up with High impact resistance and dimensional stability, these boards help create internal and external load-bearing walls and floors that are stronger and long-lasting for a vast spectrum of commercial, industrial, and residential projects.

A close-up image of the ACFA HD Board, showing its textured, fibrous surface. The board is light gray and has a rectangular shape with rounded corners.

Due to its unmatched weather-resistant, ACFA HD Board is a perfect suit for claddings and facades, not just ordinary facade solutions but masterpieces. Apart from being cost-effective and low-maintenance, they also give an effortless joint-less panel design with render finish or a classy-modern look with uniform gap/groove & are ready-to-use and flexible.

A close-up image of the ACFA HD Board, showing its textured, fibrous surface. The board is light gray and has a rectangular shape with rounded corners.

The ACFA HD Board offers lightweight structural flooring substrates for various finishes over wood studs or steel floor joists and can also be used as fire rated access floor for data centers. Durable, moisture-resistant substitute for most engineered timber and plywood substrates and a reliable alternative to concrete.

A close-up image of the ACFA HD Board, showing its textured, fibrous surface. The board is light gray and has a rectangular shape with rounded corners.

Thanks to the superior load-bearing Properties of ACFA (HD) boards, they can be covered with vinyl, tiles, marble, slate, or granite. The HD Floor Boards are a reliable substrate for mezzanine floors and lofts. They are ideal for hospitality, commercial, health care, and residential properties.

Exterior Solutions

SEGMENT	CEILING		WALL		CLADDING		FLOORING
	Exposed Grid - Designer	Concealed Frame - Groove/ Gap-Plain	Concealed Frame- Groove/ Gap - Plain/ Designer	Concealed Frame - Monolith - Plain & Recessed	Non Ventilated - Monolith/ Gap - Plain & Recessed/ Designer	VENTILATED - Groove/ Gap - Plain/ Designer	Open Terrace - Light Steel Frame - Single/ Over Decking- Plain
RESIDENTIAL	●	●			●	●	●
INDUSTRIAL	●	●	●	●	●	●	
WAREHOUSING	●		●		●		
HEALTH CARE		●		●	●	●	●
RETAIL	●	●	●	●	●	●	
EDUCATION	●	●	●	●	●	●	●
HOSPITALITY	●	●	●	●	●	●	●
LEISURE & ENTERTAINMENT	●	●	●	●	●		●



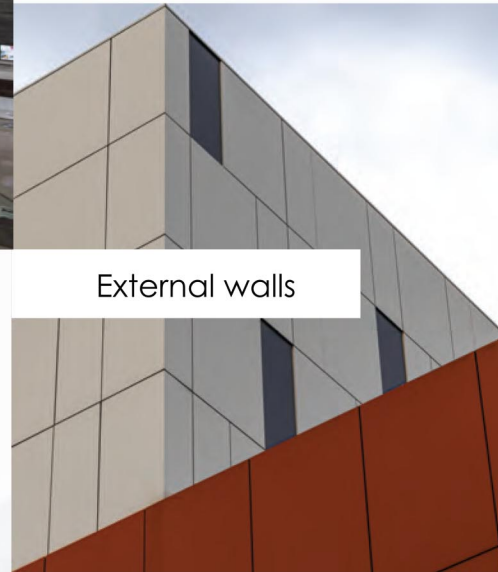
Finishing options

laminates • ceramic tiles • acrylic textures • marble • slate • granite

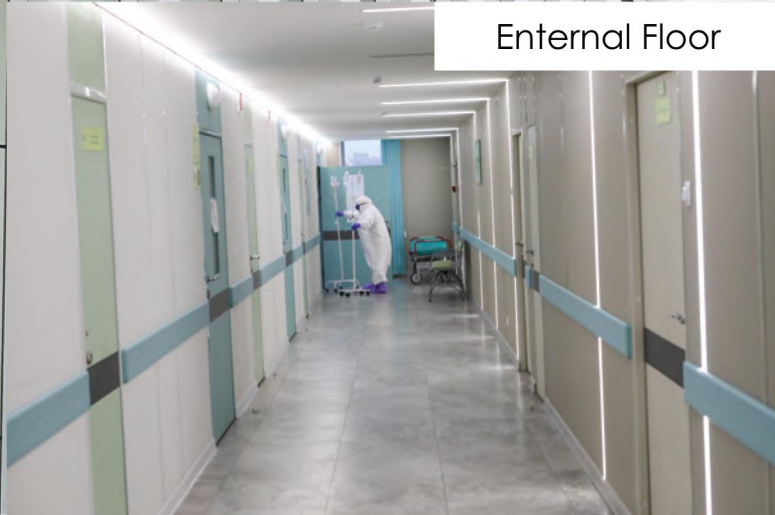
Mezzanine Floor



External walls



Internal Floor



TECHNICAL SPECIFICATION

AS PER ASTM C1186

Sl. No.	Product Characteristics	Requirement	Performance
Dimensional Tolerances			
1	Thickness (mm) Up to 5 mm 5 mm to 10 mm 10 mm to 16 mm 16 mm to 20 mm	± 0.5 mm ±1.0 mm ± 1.3 mm ±1.5 mm	Within Standard
2	Length (mm)	±0.5% ± 6 mm (max)	Within Standard
3	Width (mm)	±0.5% ±6 mm (max)	Within Standard
4	Straightness of edges-mm/m	2.6(max)	1
5	Squareness of edges-mm/m	2.6(max)	2
Physical Properties :			
6	Category as per Standard	Type A	Type A
7	Grade as per MOR	Grade - III	Grade - III
8	MOR at Wet Condition (in MPa) Minimum	10	> 15
9	Density, Kg/m ³	1450±5%	1500±50kg
10	Water Absorption (48 hrs. Test) %	≤33%	20%
11	Moisture Movement (mm/m)	< 0.05	0.04
12	Freeze-Thaw Performance -Observation Strength Retention	No deleterious effect ≥50 Cycles	Internal report
13	Heat / Rain test -Observation Structural Alternation	No Visible Cracks ≥50 Cycles	Internal report
14	Warm Water Test -Observation Strength Retention	No deleterious effect ≥50 Cycles	Internal report
15	Surface Burning Characteristics - As per ASTM E 84-21a (9&18) mm Board	Flame spread Index = 0 Smoke developed Index ≤5	Passes the requirement



2400X1200mm
(Metric)

2440X1220mm
(Imperial)

ACFAPLUS[®]
Specialist Boards



مقاوم للماء
Water Resistant



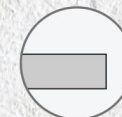
مقاوم للحريق
Fire Resistant



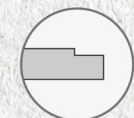
مقاوم للعفن
Mould Resistant



صديق للبيئة
Eco Friendly



Square Edges



Tapered Edges

Specially developed for wet area lining & semi-exposed applications

ACFA plus® is a specially engineered “water resistant” fiber cement board. Thanks to a Moisture Absorption value $>5\%$, even less porosity than most Ceramic Tiles, achieved through the “dip-In” silicone coating, ACFA Plus is an ideal solution for Wet Area Lining and Semi Exposed Applications.

Presented in 3 Thicknesses

7
mm

10
mm

13
mm

ACFA كفا

TE

SE



Floor tiles Lining

ACFAPLUS®

Wet areas won't be a complex challenge anymore.

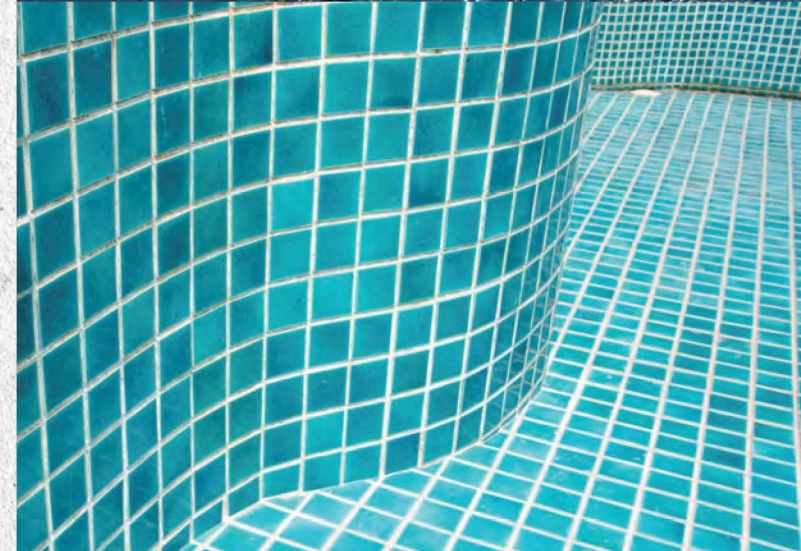
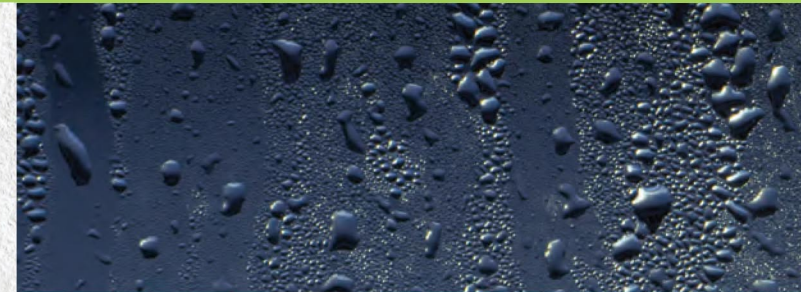
ACFA Plus® scores a 10 out of 10 on ASTM D3273 for resistance to mold and mildew propagation under ideal fungal growth conditions. ACFA Plus board cuts easily with a regular scoring Knife and installs quickly with self-drilling screws.

ACFA Plus® Fiber Cement Board provides architects, builders, and Tiling contractors with a durable, water-resistant Tile Backer Board for floors, walls, countertops, tubs, and shower areas.

If the waterproofing fails, you can rest assured that ACFA plus won't.

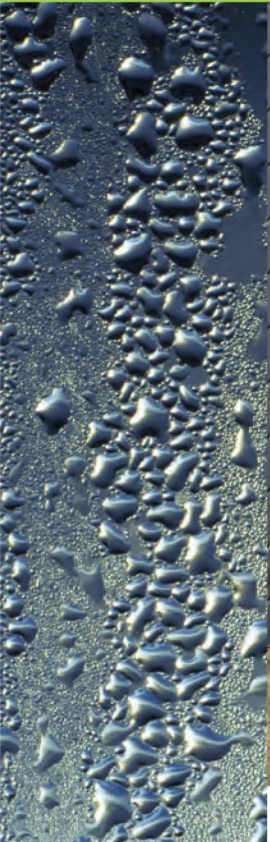
Resistant to damage from moisture, it won't deform or lose its structural integrity, which means fewer callbacks and less costly rectifications. **ACFA Plus®** has characteristics for hanging power for tiles, hooks, and fixtures, with a tensile bond strength of up to 75 % greater than wet area plasterboard.

It can hold tiles with a maximum weight between up to 100 kg/m² depending on the thickness of the tiles and ACFA plus sheet used, ensuring that expensive bathroom tiles are always secure. **ACFA Plus®** Fiber Cement Boards are reliable for walls, floors, and ceiling applications in bathrooms, laundries, and kitchens.



ACFA اڪفا

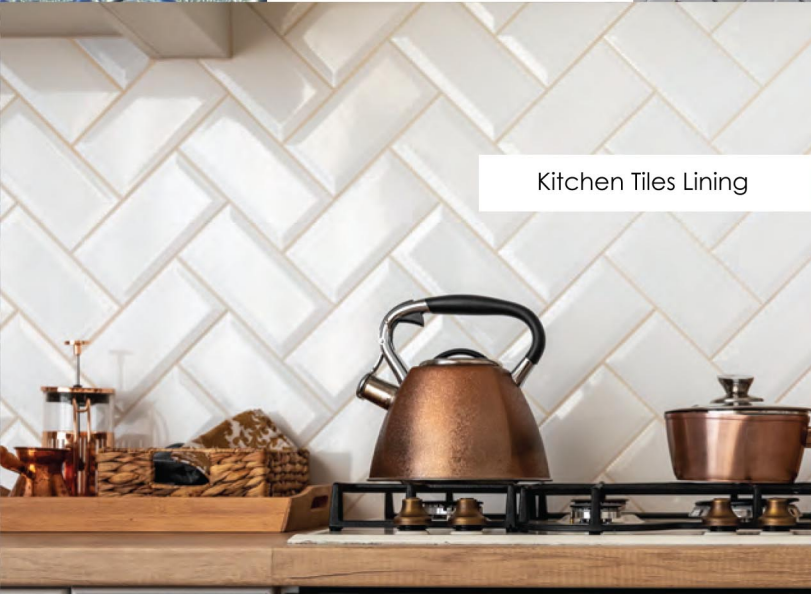
Specially developed for wet area lining



Bathrooms Tiles Lining



Bathrooms Wall Lining



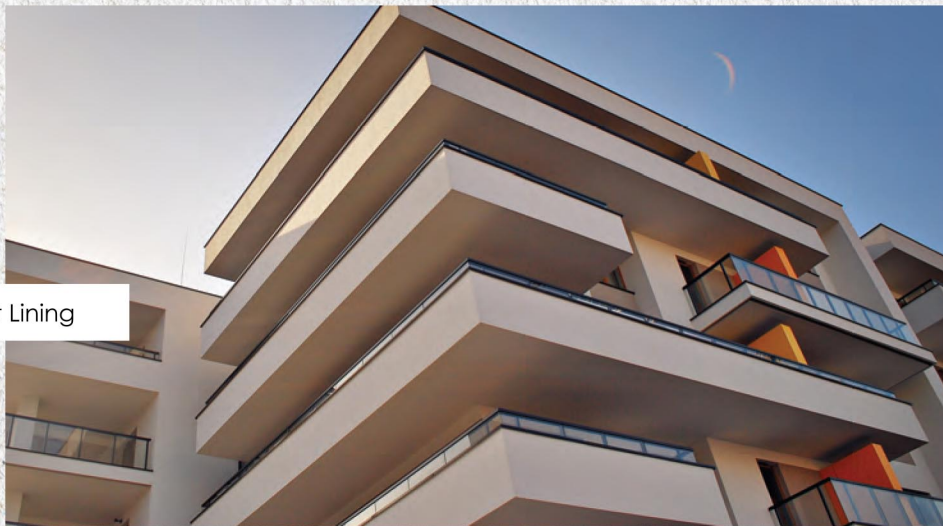
Kitchen Tiles Lining

Finishing options

laminates • ceramic tiles • acrylic textures • marble • slate • granite

ACFA Plus® is a new age Fiber Cement Board type with excellent performance under semi-exposed weathering conditions. It is perfect when used in ducting, cladding, or soffit linings for midrise structures finished with a suitable exterior grade paint or protective coating.

ACFA Plus® belongs to the new generation of asbestos-free cladding sheets, distinguished by a special "dip-in" silicone coating. Flat sheeting reinforced with best-quality cellulose fibers. The sheets are non-combustible & resistant to rot, fungus & vermin attack.



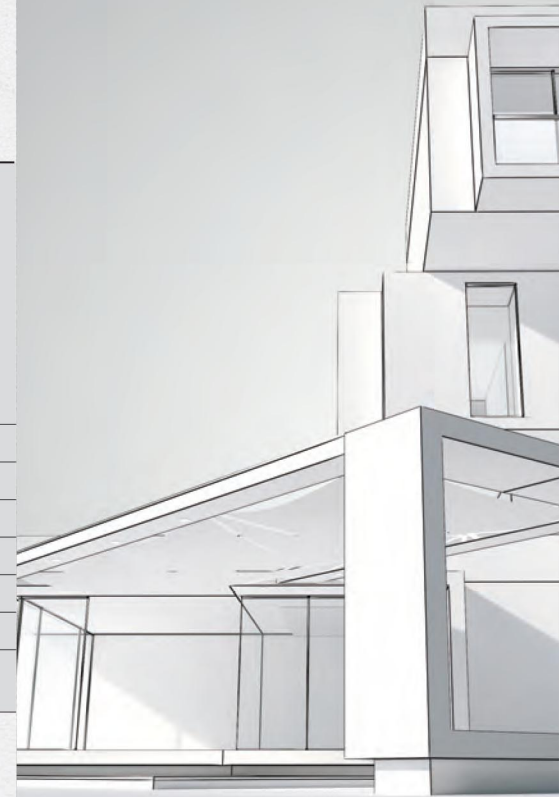
Soffit Lining



External Cladding

Semi Exposed Applications

SEGMENT	SOFFIT/EAVES LINING	DUCT ENCASING		CLADDING		ROOF SUBSTRATE/SARKING	BACK LINING
	Concealed Frame - Groove/ Gap-Plain	Concealed Frame - Groove/ Gap - Plain/ Designer	Concealed Frame - Joint less - Plain & Recessed	Non Ventilated - Jointless/ Gap - Plain & Recessed/ Designer	Ventilated - Groove/ Gap - Plain/ Designer	VENTILATED - Groove/ Gap - Plain/ Designer	SPANDREL - Single / Over Bitumen - Plain
RESIDENTIAL	●	●	●	●	●	●	
INDUSTRIAL	●	●		●			
WAREHOUSING							
HEALTH CARE	●	●	●	●	●	●	●
RETAIL	●	●	●	●	●	●	●
EDUCATION	●	●	●	●	●	●	●
HOSPITALITY	●	●	●	●	●	●	●
LEISURE & ENTERTAINMENT	●	●	●	●		●	





ACFAPLUS®

TECHNICAL SPECIFICATION

AS PER ASTM C1186

Sl. No.	Product Characteristics	Requirement	Performance
Dimensional Tolerances:			
1	Thickness (mm) Up to 5 mm 5 mm to 10 mm 10 mm to 16 mm 16 mm to 20 mm	± 0.5 mm ±1.0 mm ± 1.3 mm ±1.5 mm	Within Standard
2	Length (mm)	±0.5% ± 6 mm (max)	Within Standard
3	Width (mm)	±0.5% ±6 mm (max)	Within Standard
4	Straightness of edges-mm/m	2.6(max)	
5	Squareness of edges-mm/m	2.6 (max)	
Physical Properties :			
6	Category as per Standard	Type A	Type A
7	Grade as per MOR	Grade-II	Grade - II
8	MOR at Wet Condition (in MPa) Minimum	7	> 9
9	Density, Kg/m ³	1300±5%	1300±50kg
10	Water Absorption (48 hrs. Test) %	≤33%	<5%
11	Moisture Movement (mm/m)	< 0.05	0.01
12	Freeze-Thaw Performance -Observation Strength Retention	No deleterious effect ≥50 Cycles	Internal report
13	Heat / Rain test -Observation Structural Alternation	No Visible Cracks ≥50 Cycles	Internal report
14	Warm Water Test -Observation Strength Retention	No deleterious effect ≥50 Cycles	Internal report
15	Surface Burning Characteristics-As per ASTM E 84-21a (9&18) mm Board	Flame spread Index = 0 Smoke developed Index ≤5	Passes the requirement



تشطيب رائع
Fine Finish



مقاوم للأشعة
X-Ray Resistant



مقاوم للصدمات
Impact Resistant



ممتص للصوت
Sound Absorption



عازل للصوت
Sound Resistant



مقاوم للماء
Moisture Resistant



مقاوم للحريق
Fire Resistant



مقاوم للعفن
Mould Resistant



مديق للبيئة
Eco Friendly

www.acfasa.net

ACFA كفا



المملكة العربية السعودية . صندوق البريد: ٢٨٥٣ الرياض ١٣٣٢٢

Ksa P.O.Box: 2853-Riyadh 13322

E-mail info@acfasa.com